

CYLINDER HEAD

The intake and exhaust ports have been modified to improve cylinder breathing and volumetric efficiency. Also, the exhaust valve seats have been repositioned by 1.5 mm (.06 in.) and the exhaust valve heads enlarged from 31 mm (1.22 in.) to 34 mm (1.34 in.); diameter of the intake valves is 38 mm (1.50 in.). The intake and exhaust valve stems have grooved valve keeper seats.

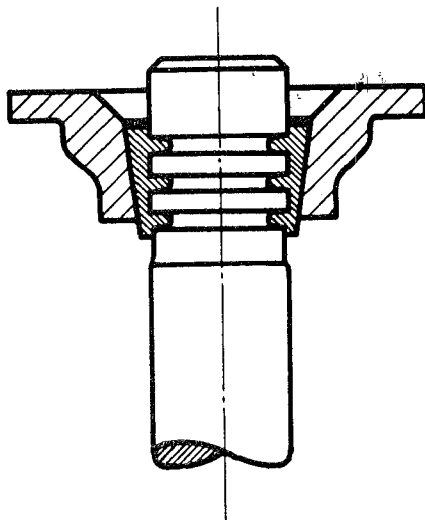


Fig. 2

The valve spring retainers have been strengthened and reshaped to accommodate the new valve keepers.

Installed length of valve springs remains unchanged.

Type 1600 C: Intake = 42.5 mm (1.66 in.)

Exhaust = 41.5 mm (1.63 in.)

Type 1600 SC: Intake = 41.0 mm (1.61 in.)

Exhaust = 40.0 mm (1.58 in.)

To keep oil losses at a minimum, the intake valves have been provided with sealing caps. When installing the sealing caps, it should be noted that first the valve is pushed into the valve guide and then the sealing cap pulled over the valve guide until the base of the cap comes to rest against the valve guide.

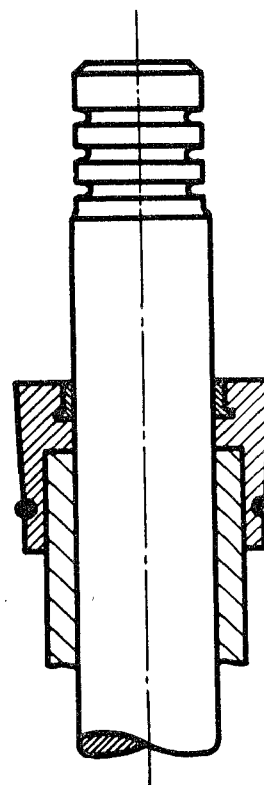


Fig. 3