

CARBURETOR LINKAGE, HAND THROTTLE AND BELL CRANK

From identification-No.

Coupé	117 601	Hardtop	201 601
Cabriolet	155 601	Roadster	89 601

the carburetor linkage has been modified.

General Remarks

The metal connecting piece between the long accelerator rod and the tie rod on the bell crank is replaced by a flexible piece, see Fig. 6/3. This eliminates the vibration between engine and accelerator pedal.

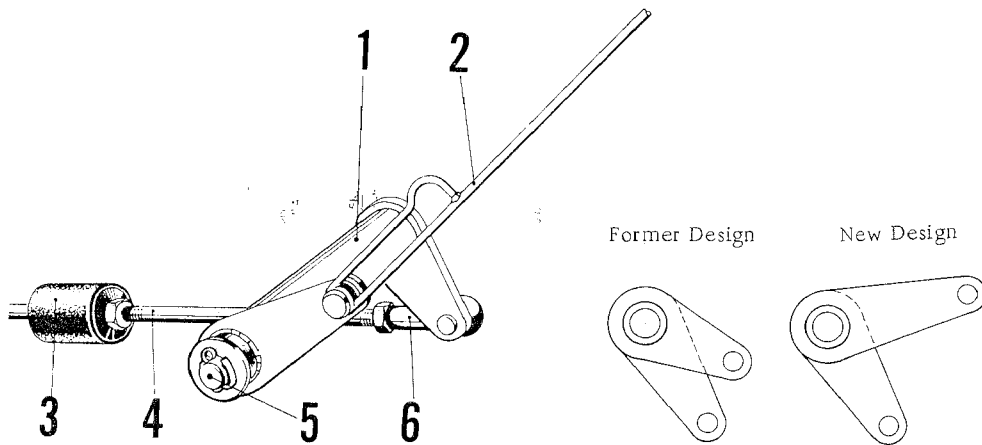


Fig. 6

- | | |
|--------------------|---|
| 1. Bell crank | 4. Accelerator rod to the accelerator pedal |
| 2. Accelerator rod | 5. Bearing bolt |
| 3. Flexible piece | 6. Control-rod |

By modifying the bell crank of the carburetor linkage on transmission, a progressive opening of the throttles is possible. This allows a slow opening of the throttles during the first one third of the accelerator pedal travel and results in soft driving, especially in traffic. The table below shows the relation of the throttle valve position to the accelerator pedal travel.

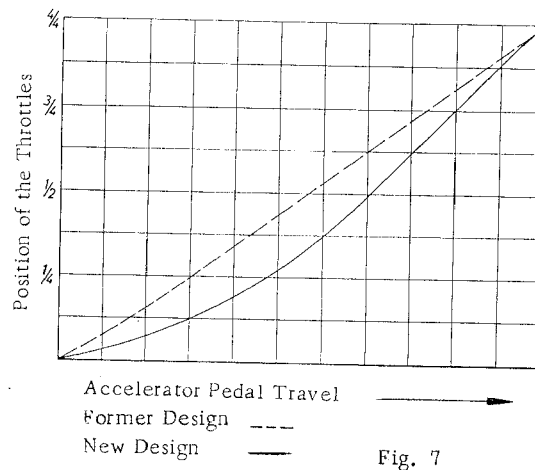


Fig. 7