

INSTALLATION OF SAFETY BELTS

As of serial Nos.

Coupe 120 620

210 931

Cabriolet 156 850

anchorages for the mounting of safety belts are standard equipment.

Location of the anchorage points and mounting of the necessary parts:

Provision for the anchorage of the different types of belts (air-line type, diagonal shoulder type and diagonal-plus-lap type) has been made at the following points:

a) Air-line safety belts

The spare part No. of the air-line safety belt supplied by us is: 644.803.011.01.

The following anchorage parts are necessary:

2 Shackles	644.803.111.02
4 Spring washers B8 DIN 137 bost.	900.028.010.01
8 Hexagon nuts M 8x1 DIN 934-6S gal Zn 9	900.076.014.02

The anchorage points are located behind the front seats between the floor and the vertical sheeting. The measures of the points for the fastening of the shackles and/or bolts are shown in the figure below.

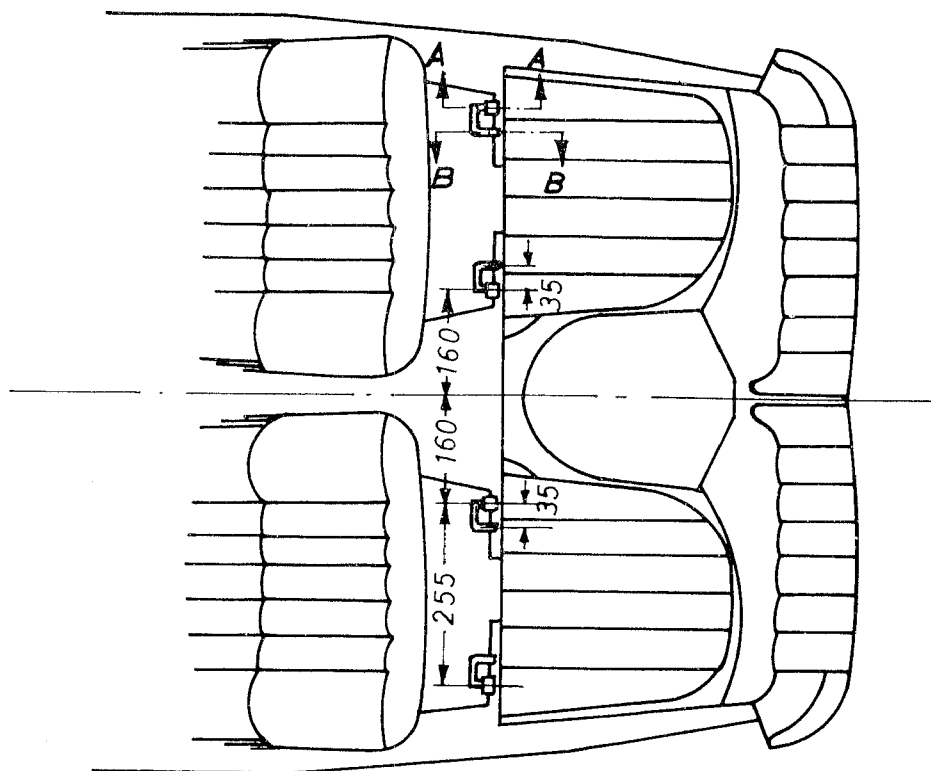


Fig. 1

Mounting anchorage parts

Remove locking screw in A-A and plug in B-B from the vehicle underside

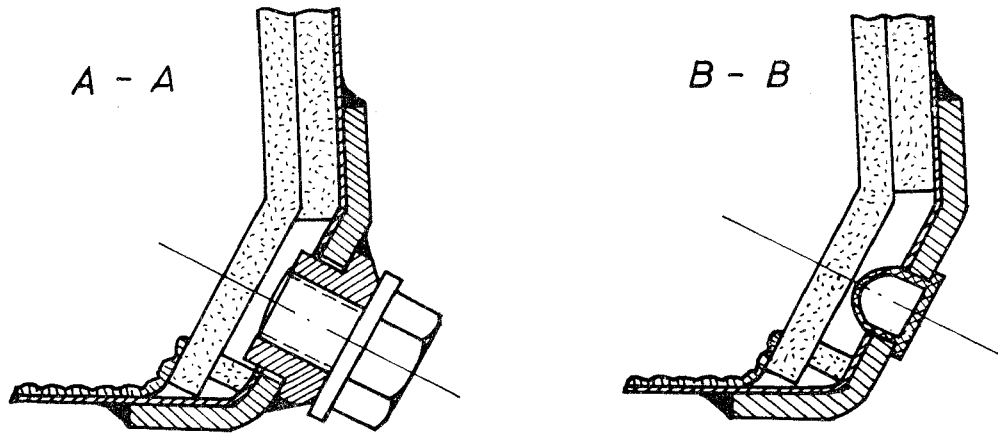


Fig. 2

Pierce through the opening with a marking tool and cut out floor covering in A-A and B-B. Screw counter nuts on the shackles and insert shackles. Fasten shackles with hexagon nuts M 8x1 DIN 934-6S gal Zn 9 from the vehicle underside (see Fig. 3).

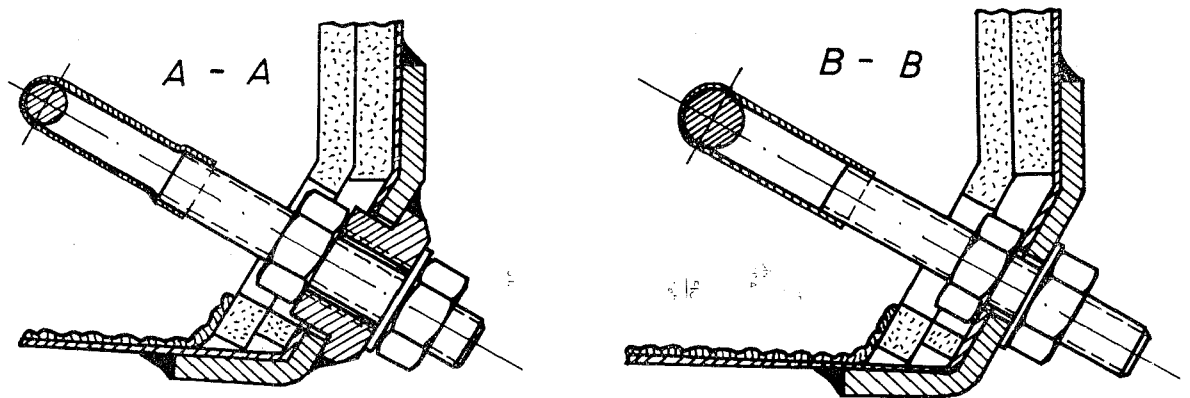


Fig. 3

In several countries (USA for example) the regulations require the mounting of a threaded bolt for the anchorage. The threaded bolt 7/16" is screwed in A-A.

Mounting

Remove locking screws in A-A. Cut out floor covering. Screw in 7/16" threaded bolt and fasten with a nut from the vehicle underside. Add spring washer.

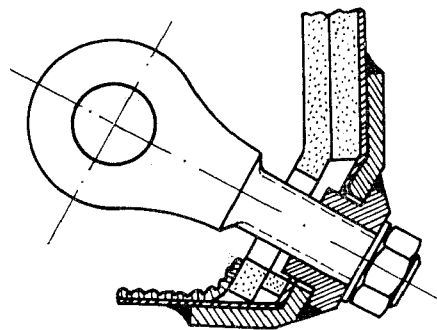


Fig. 4

b) Diagonal shoulder safety belts

A diagonal shoulder safety belt (complete) is supplied by us under the spare part No. 644.803.011.02, with the following anchorage parts:

1 Shackle	644.803.111.02
2 Spring washers 8 DIN 137 bost.	900.028.010.01
4 Hexagon nuts M 8x1 DIN 934-6S gal Zn9	900.076.014.02
1 Retaining bolt	644.803.121.00
1 Round anchor plate	644.803.123.00
1 Spring ring 8 DIN 7980 bost.	900.142.002.01
1 Spring ring 12 DIN 7980 bost.	900.142.004.01
1 Head screw M 8x45 DIN 6912-8G gal Zn 9	900.119.007.02

The installed diagonal shoulder belt passes from the right bottom side over the left shoulder of the occupant sitting on the left side and is fastened with a retaining bolt to the left rear side of the car's interior. The belt for the right seat occupant passes over his right shoulder and is mounted to the right rear side.

Mounting anchorage parts

Install shackle behind the front seat, see item a).

Cut out lateral covering at the anchorage point in the rear of the car's interior (see Fig. 5)

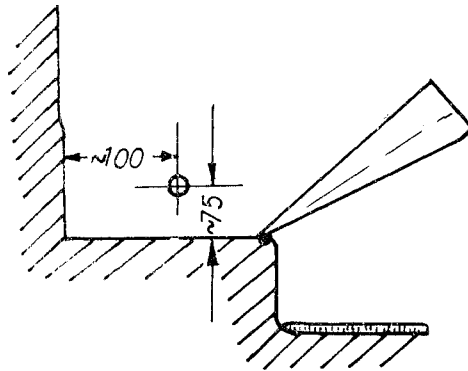


Fig. 5

Insert spring ring 12 DIN 7980 bost. in the welded-in metal piece, mount round anchor plate and fasten retaining bolt (644.803.121.00) with head screw M 8x45 DIN 6912-8G gal Zn 9 on the metal piece. Add a spring ring 8 DIN 7980 bost. under the head screw.

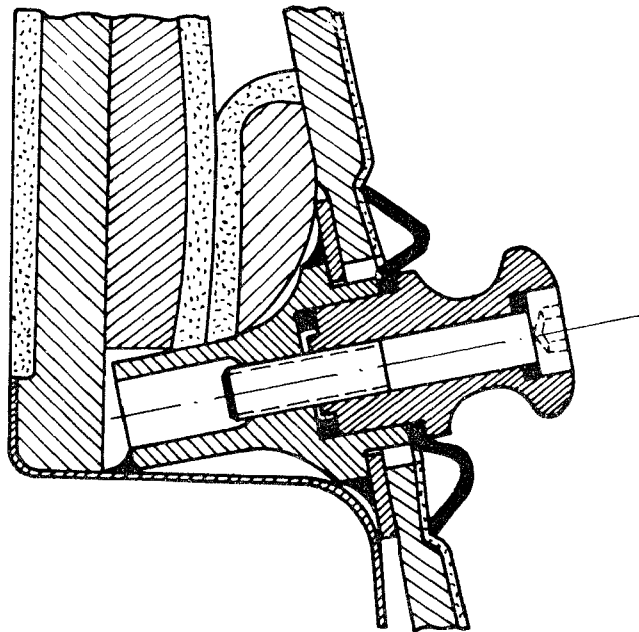


Fig. 6

c) Diagonal-plus-lap safety belts

The complete diagonal-plus-lap safety belt has the spare part No. 644.803.011.03.

The following anchorage parts are necessary:

2 Shackles	644.803.111.02
4 Spring washers B 8 DIN 137 bost.	900.028.010.01
8 Hexagon nuts M 8x1 DIN 934-6S gal Zn 9	900.076.014.02
1 Retaining bolt	644.803.121.00
1 Round anchor plate	644.803.123.00
1 Spring ring 8 DIN 7980 bost.	900.142.002.01
1 Spring ring 12 DIN 7980 bost.	900.142.004.01
1 Head screw M 8x45 DIN 6912-8G gal Zn 9	900.119.007.02

The mounting of the anchorage parts is to be carried out according to operations a) and b).

(With the round anchor plate as standard equipment it is necessary to remove the countersunk screw and the centering disc in order to mount the retaining bolt 644.803.121.00 (see Fig. 6).

Modified anchorage parts for safety belts

Shackle 644,803,111,02 is being replaced by retaining bolt 644,803,122,00.

(However shackle 644,803,111,02 is still being used for subsequent installation into vehicles without anchorage points.)

Retaining bolt 644,803,122,00 can be installed into all vehicles as of serial No.

Coupe 120 620

and/or 210 931

Cabriolet 156 850

Mounting retaining bolt:

Remove countersunk screw in A-A and screw in retaining bolt with spacer tube (see sketches).

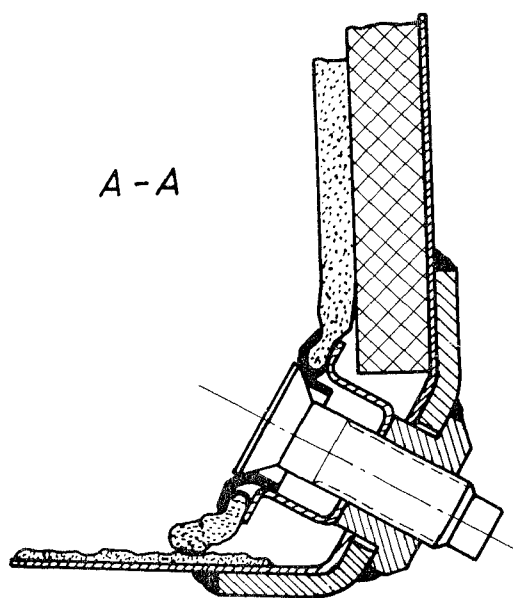


Fig. 7

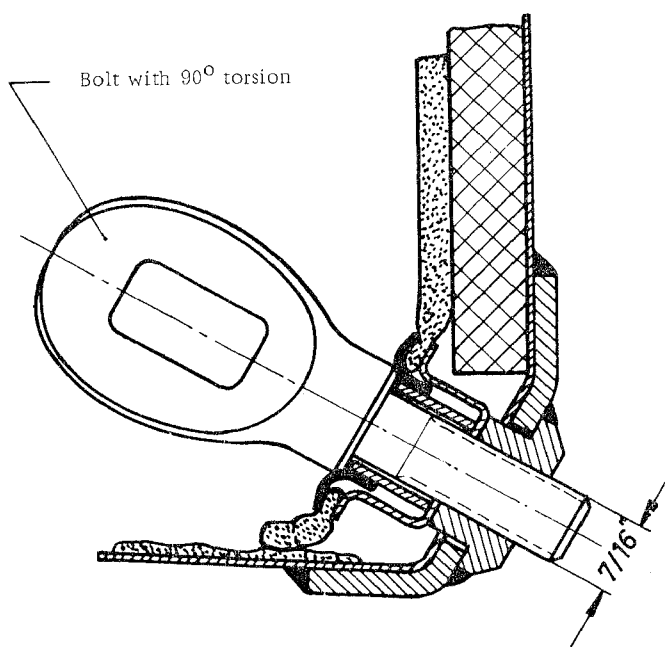


Fig. 8

Subsequent installation of anchorage parts for safety belts

In vehicles as of type 356 A

Coupe 101 693

Cabriolet 150 001

Speedster 83 792

a subsequent installation of anchorage parts for air-line safety belts, diagonal shoulder safety belts or combined diagonal-plus-lap safety belts is possible.

As anchorage parts are used: shackles, spare part No. 644.803.111.02; with nuts M 8x1 DIN 934-6S gal Zn 9, spare part No. 900.076.014.02, 4 each; and spring washers B 8 DIN 137 bost., spare part No. 900.028.010.01, 2 each; and/or spring rings 8 DIN 7980 bost., spare part No. 900.142.002.01, 2 each. The shackles are screwed on to the vertical sheeting by means of a reinforcement plate from the outside. The same shackles are used for the fastening of diagonal shoulder safety belts to the rear side-wall of the car's interior. To obtain the necessary rigidity, two reinforcement plates for each shackle have to be made (as per sketch), and mounted as described.

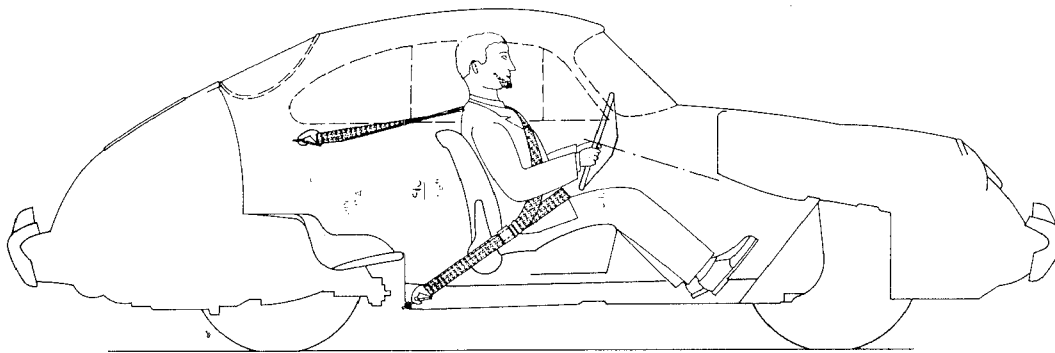


Fig. 1

Mounting of anchorage parts for diagonal shoulder safety belts in the rear of the car's interior

Operation

1. Make reinforcement plates (as per sketch) to fasten the shackles to the side-wall in the rear of the car's interior (see Fig. 2).
2. Remove coverstrip and/or lateral covering in the rear of the Cabriolet.

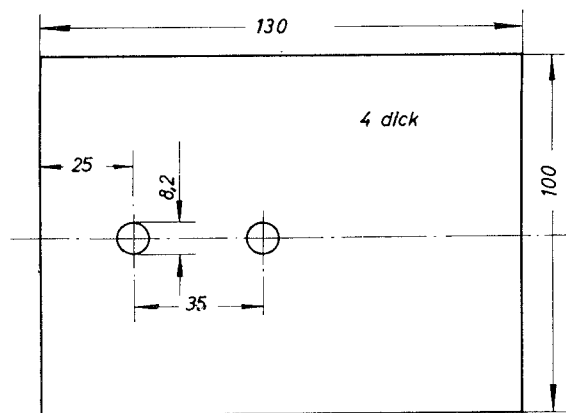


Fig. 2

3. Trace holes (as per sketch) to fasten the shackles (for the Coupe see Fig. 3 and 4, for the Cabriolet Fig. 5 and 6).

Coupe

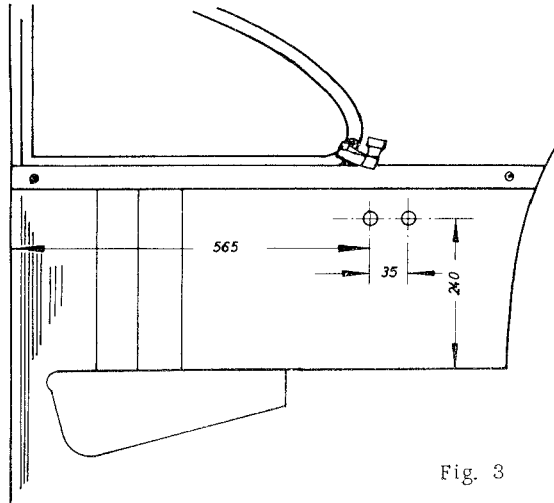


Fig. 3

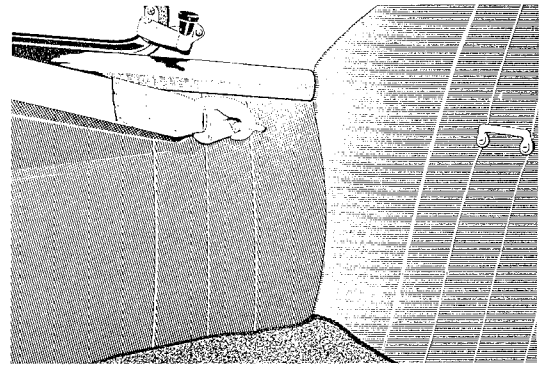


Fig. 4

Cabriolet

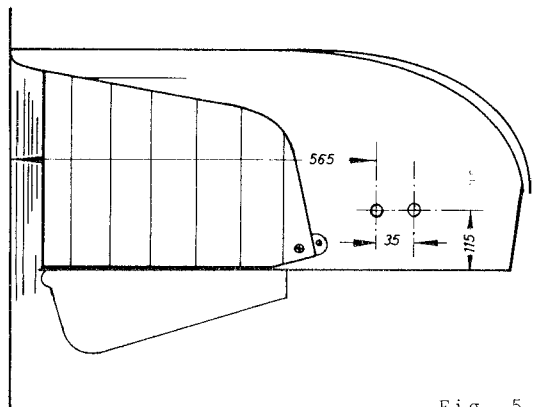


Fig. 5

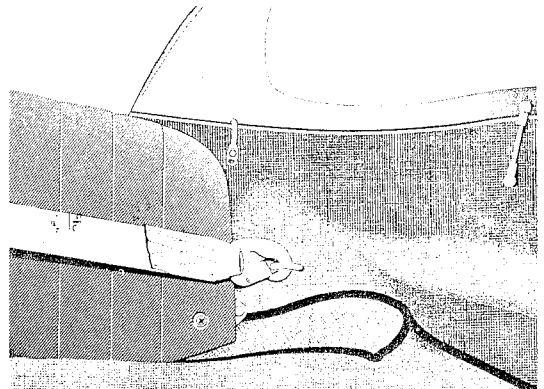


Fig. 6

4. To avoid a rolling up or tearing of the covering, press one of the punched reinforcement plates to the marked spot of the covering when piercing the holes from the inside to the outside of the vehicle.

5. With the Coupe remove the retaining clips for the interior covering and detach with palm the covering of the wheel housing.
6. Push the shackle through the interior covering and unscrew the nuts behind the covering so far that the loop of the shackle protrudes about 18 mm into the rear of the car.

Installation of anchorage parts for air-line or diagonal shoulder safety belts to the vertical sheeting

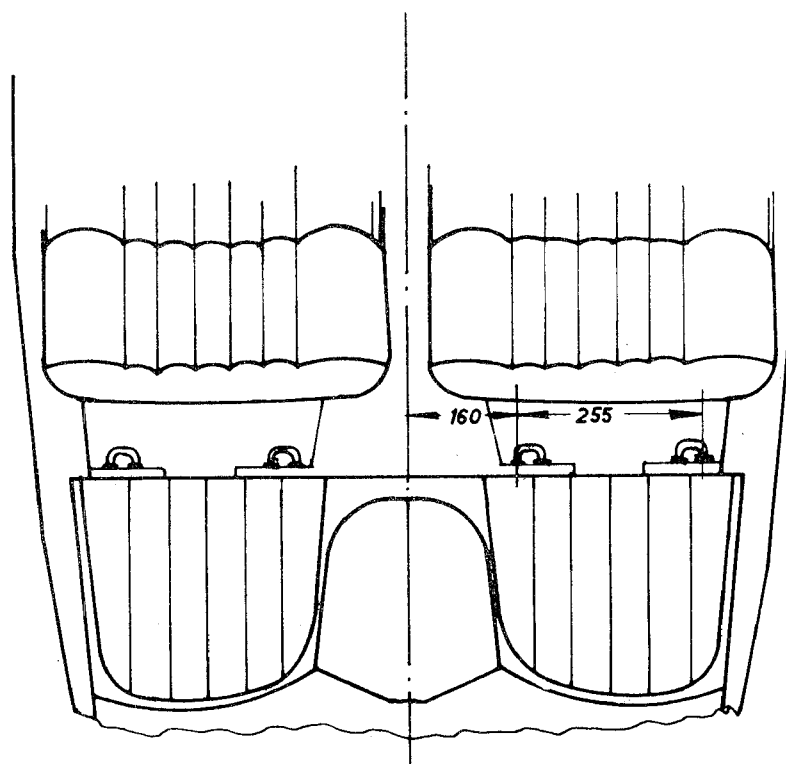


Fig. 8

1. Mark the position of the 4 shackles according to sketch and trace through the covering by means of an awl (see Fig. 8).
2. Detach covering and pierce through the side-wall with a 8,2 mm Ø driller.
3. Punch the marked positions of the Boucle-covering with a 8 mm Ø hollow punch.
4. Push the shackle through the Boucle-covering and screw on counter nuts. Treat reinforcement flap with body sealing compound and push shackle through the holes of the vertical sheeting. Mount reinforcement flap and tighten with spring ring and nut (see Fig. 9).
5. Treat the fastening, from the outside, with body sealing compound.

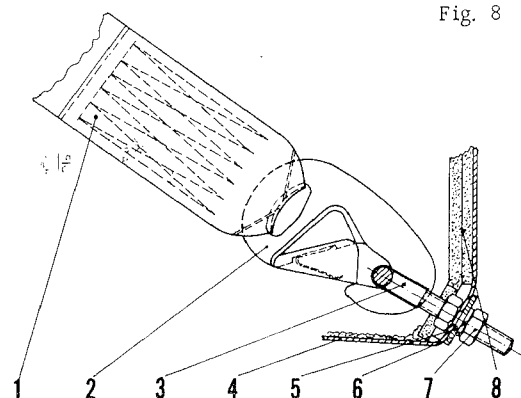


Fig. 9

- | | |
|----------------|-----------------------|
| 1. Safety belt | 5. Reinforcement flap |
| 2. Hook | 6. Spring ring |
| 3. Shackle | 7. Nut |
| 4. Body bottom | 8. Covering (Bouclé) |

Note:

The shackles mounted to the vertical sheeting have a test-load of about 1500 kg each. This corresponds to American standards.

For cars not registered in the Federal Republic, verify, whether the 1500 kg test-load corresponds to the regulations of the country in question.