

## Subsequent Installation of an Outside/Inside Thermometer

Messrs VDO Tachometerwerke and Moto-Meter offer an outside/inside thermometer for installation.

Following indications are for the installation into vehicles as of

Serial No. Coupe	117 601
and	210 601
Cabriolet	155 601

(On former vehicles without a clock, a 61 mm diam. orifice for the installation of the indicator can be practised in a suitable position on the dashboard.)

### General:

The proper function of the outside/inside thermometer depends on the correct installation of the outside sensor. The outside sensor must be fixed in such a way that it is not exposed to the direct air stream or the sun and where it is safe from damage. The inside of the bumper is the most favourable position. The capillary tube from the outside sensor to the indicator must be carefully handled and must not get bent or pulled. Moreover, any contact with current-carrying parts must be avoided.

### Installing outside/inside thermometer

(The indicator is to be installed instead of the clock and the clock on the right hand side beside the glove box.)

1. Take out spare tire and disconnect battery.
2. Mark and then practise orifice on the right hand side beside the glove box (see Fig. 1).

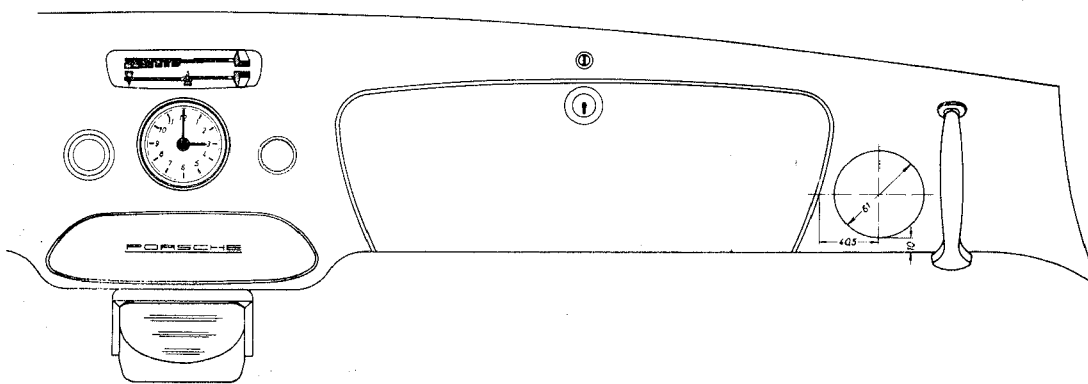


Fig. 1

3. Remove clock and reinstall into orifice beside the glove box. Reposition cables as appropriate.
4. Disconnect battery connecting terminal of cable and pull cable into driver's compartment.

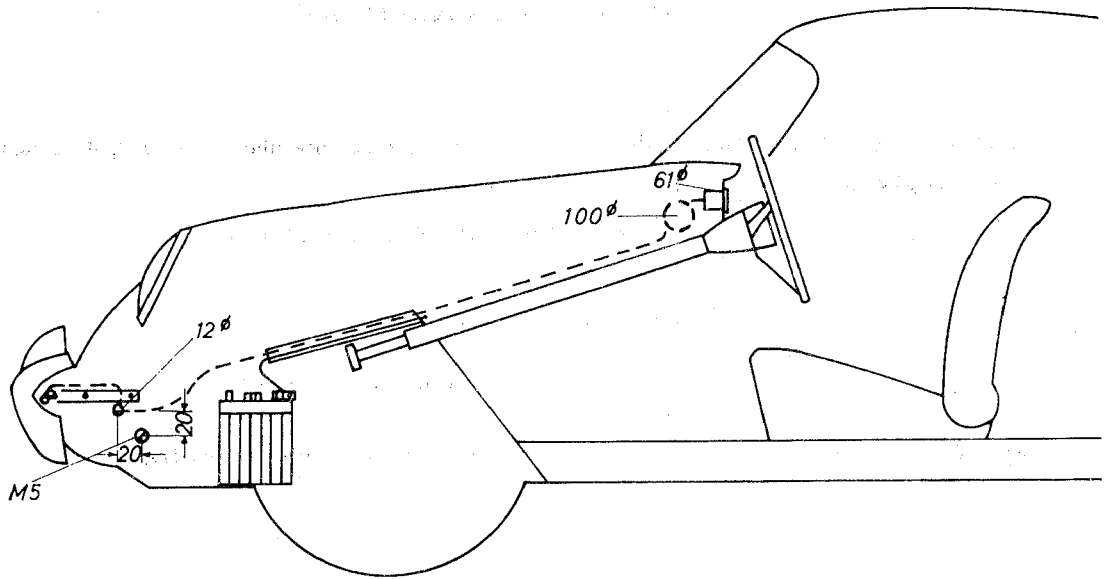


Fig. 2

5. Drill a 12 mm diam. hole into the right panel of the front compartment in front of the battery just above the earthing screw M 5 (see Fig. 2).
6. Guide the outside sensor through the orifice on the dashboard to the right hand side, then via the battery cable tube into the front compartment and through the 12 mm bore down to the bumper.
7. Fix the VDO outside sensor to the studs of the trim strip at the inside of the bumper using the screws showing to the right from the car's middle.
- 7a. The Moto-Meter outside sensor is best mounted by means of a clip lined with 2 mm thick rubber (see specifications for local manufacture Fig. 3). Fix the clip onto the first screw of the right bumper bracket, seen from the car's middle.

When using this clip a piece of flat steel must be fixed onto the above mentioned screw in order to facilitate the fixing.

8. Properly lay capillary tube from outside sensor over bumper bracket up to indicator.  
Seal 12 mm bore in the front compartment with grommet. Roll up and fix behind the dashboard any possibly remaining capillary tube (see Fig. 2).
9. Connect indicator lamp to circuit of instrument light (58b).
10. Connect indicator warning lamp to ignition/starter terminal 15/54.
11. Pull battery cable back into front compartment and connect.
12. To fix indicator mount clamp bracket from behind and tighten with clamp nuts.

Note: Any inaccurate indication can only be adjusted by the manufacturers or their representatives.

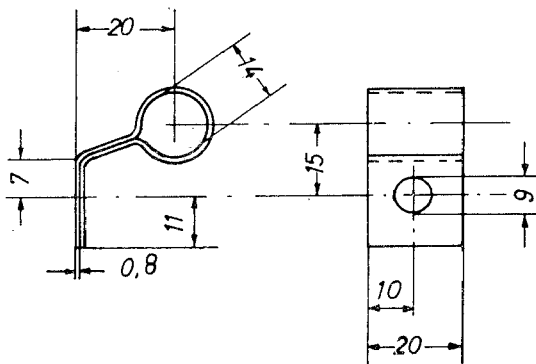


Fig. 3