

TRAILER HITCH

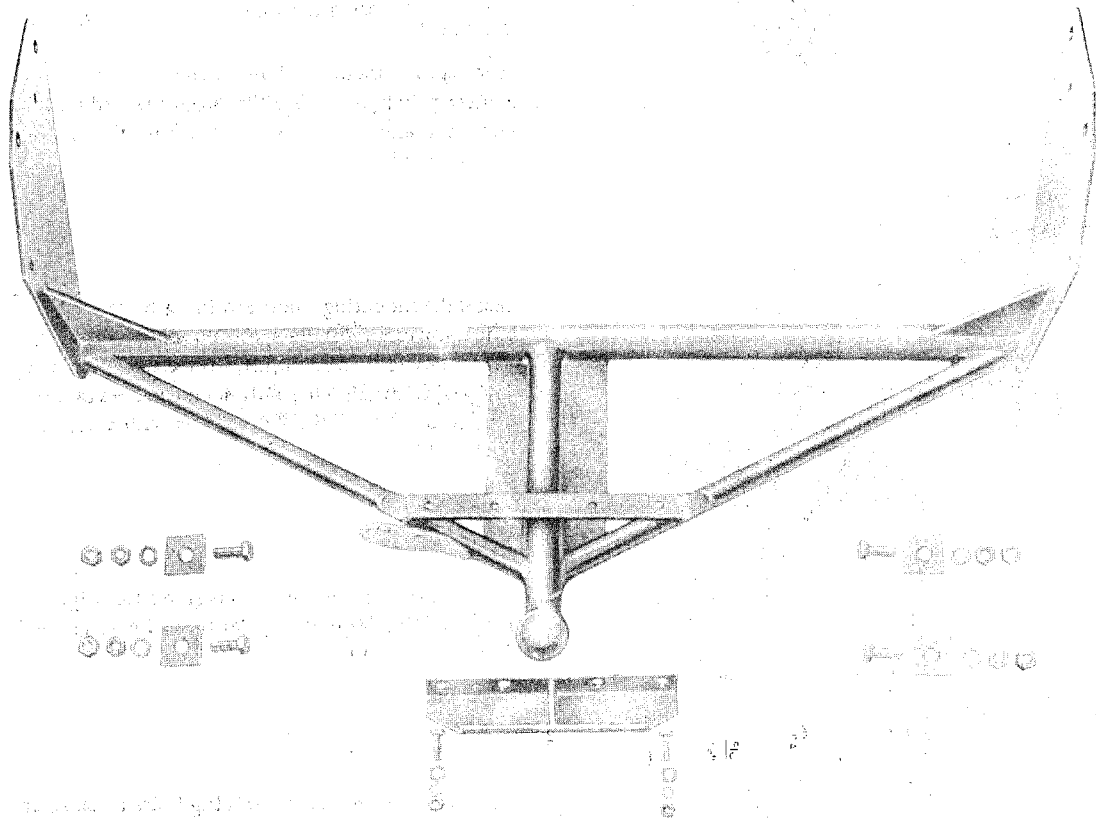
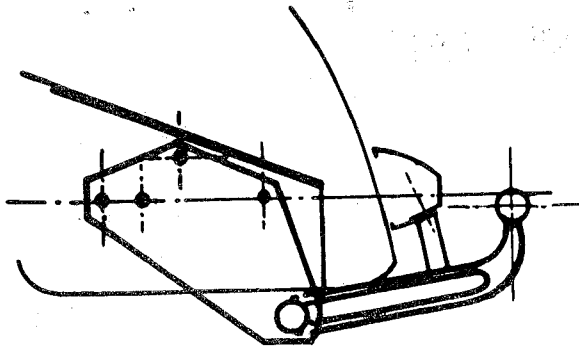


Fig. 1

Installation

1. Loosen bumper bracket retaining bolts at body and bumper.
2. Pull bumper back by about 1/2 inch and detach cable for license plate illumination.
3. Withdraw bumper, together with brackets, from the body.
4. Scrape off undercoating in the areas to be covered by the hitch mounting plate and, on the engine side, where washers will fit, in order to provide a clean, metallic base for mounting.
5. Slide the trailer hitch assembly into place and secure with bumper bracket retaining screws (see Fig. 2 and 3).

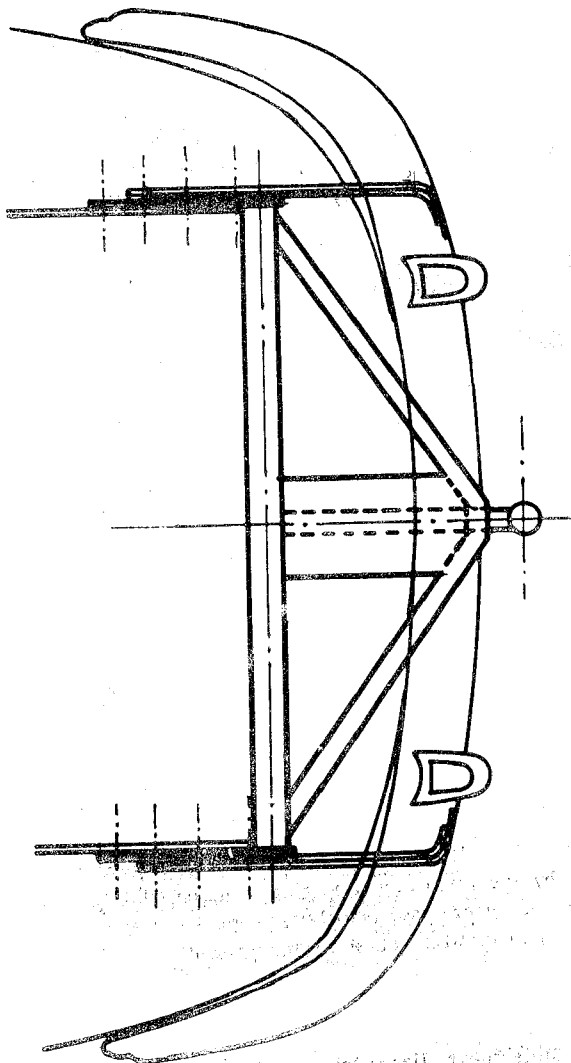


6. Using an angle-head drill and a short drill bit of 12, 5 mm (1/2 inch) diameter, drill the two additional mounting holes by using the mounting plate as guide.

7. Drill the holes on the opposite side of car.

Note:

The topmost mounting hole can be marked with a center punch and drilled from within the engine compartment.



8. Insert the mounting plate retaining bolts for both sides, together with the large washers which are supplied with the hitch kit, insert lock-washers, and tighten with nuts, then secure with a second nut to lock.

9. Remove bracket retaining bolts (used for aligning plate for drilling).

10. Loosen bumper bracket **retaining** bolts at bumper and reset brackets by the **width** of mounting bracket thickness (approx. 5 mm or .2 inch). If necessary, lengthen mounting holes in bumper brackets.

11. Guide bumpers, together with brackets, into openings in the body. Attach license plate illumination cable according to color code.

Fig. 3

12. Insert bumper bracket retaining screws through holes in brackets, together with washers and lock washers, and align bumper.

Make sure that the body does not rub against the bumper brackets. If necessary, enlarge bracket holes in the body, repainting worked surfaces to protect against rust.

13. Mark holes for bumper hitch support in bumper and drill to 8.5 mm (.32 in.) diameter.
14. Insert bumper reinforcing plate behind bumper and fasten the hitch support with bolts.
15. Tighten mounting plate and bumper bracket supporting bolts at body and bracket ends in bumper.
16. Install trailer light wiring.

Trailer Light Wiring

The following outline makes provision for the installation of a separate directional signal (blinker) control lamp on the instrument panel in driver's line of sight.

The system includes blinker lights and cable base manufactured by SWF, and the 5-terminal plug and socket by Hella.

It is always possible to utilize components manufactured by other firms.

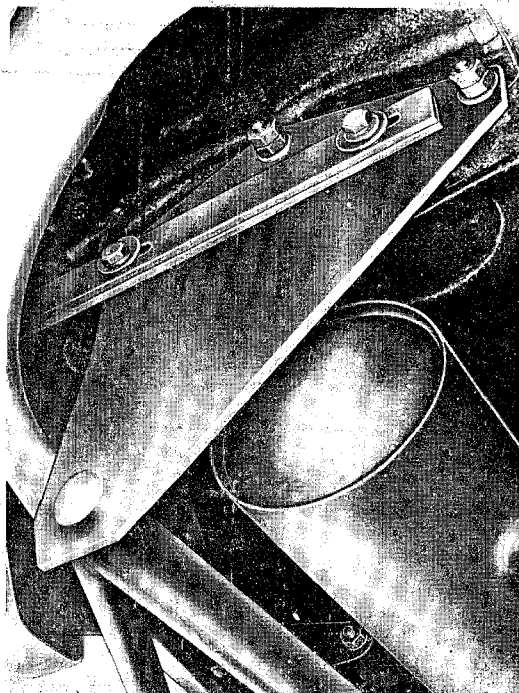


Fig. 4

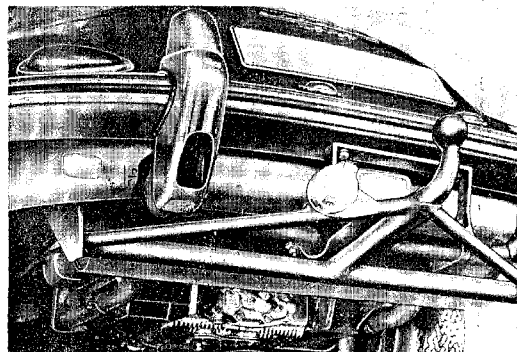


Fig. 5

1. In place of the standard blinker flasher and base with terminal bar, connect the parts 6, 7, and 7a (see Wiring Diagram).
2. Install the separate (additional) blinker control lamp to the left of the combination instrument (see Point 5, Wiring Diagram).
3. The connecting cables for the trailer tail/ stop lights and license plate illumination should be connecting to the appropriate wires in the car, as shown in the Wiring Diagram.

Wiring Diagram

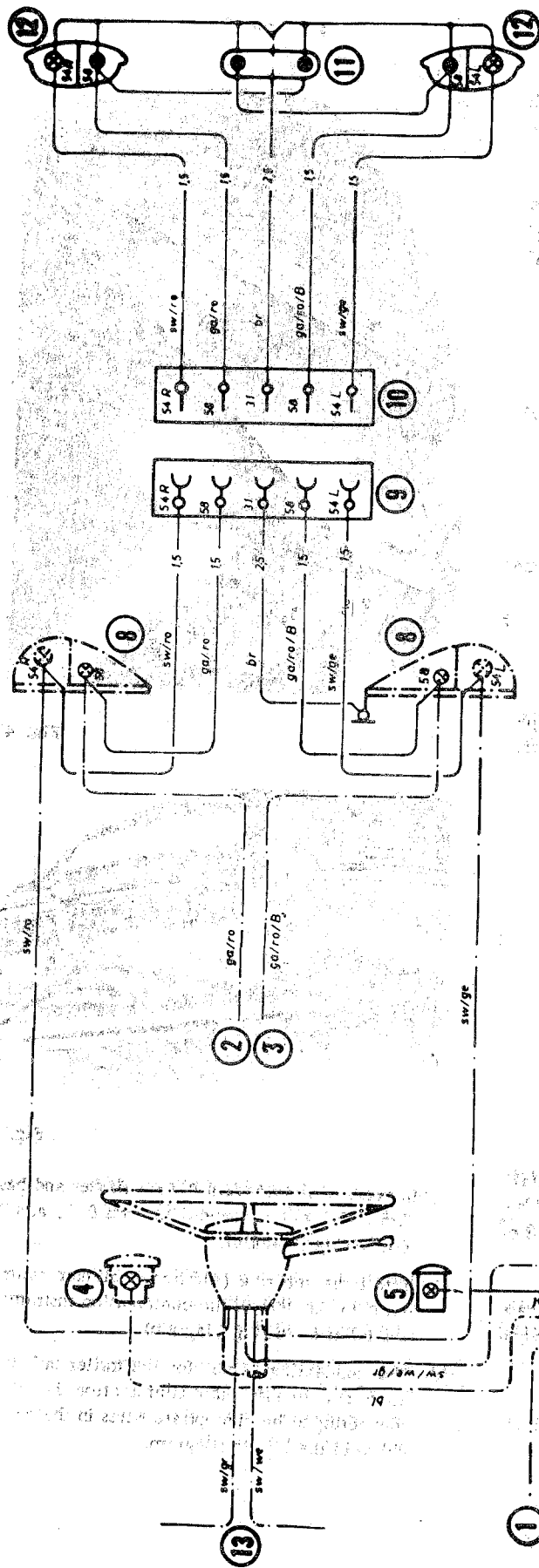


Fig. 6

- 1 Cable to Fuse 1
- 2 Cable to Fuse 7
- 3 Cable to Fuse 8
- 4 Blinker Control Light in Tachometer
- 5 Trailer Blinker Control Light (subsequently installed)
- 6 Terminal Bar (identical with WEKO 404 tr 4 pol.)
- 7 Blinker Flasher (identical with SWF BGDO 1)

sw = black
 we = white
 ro = red
 ga = grey
 br = brown

ge = yellow
 bl = blue
 gr = green
 B = with identification strip

- 8 Blink/Tail Lights on Vehicle
- 9 Car Socket (identical with Hella 12/5 A 5 pol.)
- 10 Trailer Plug (identical with Hella 12/5 B 5 pol.)
- 11 License Plate Illumination (on trailer)
- 12 Blink/Tail Lights on Trailer
- 13 Cables for Forward Blinkers

--- Original Cables in Car
 — New Cables Required